

2019 Regional Transportation Plan

North Country Council Transportation Advisory Committee

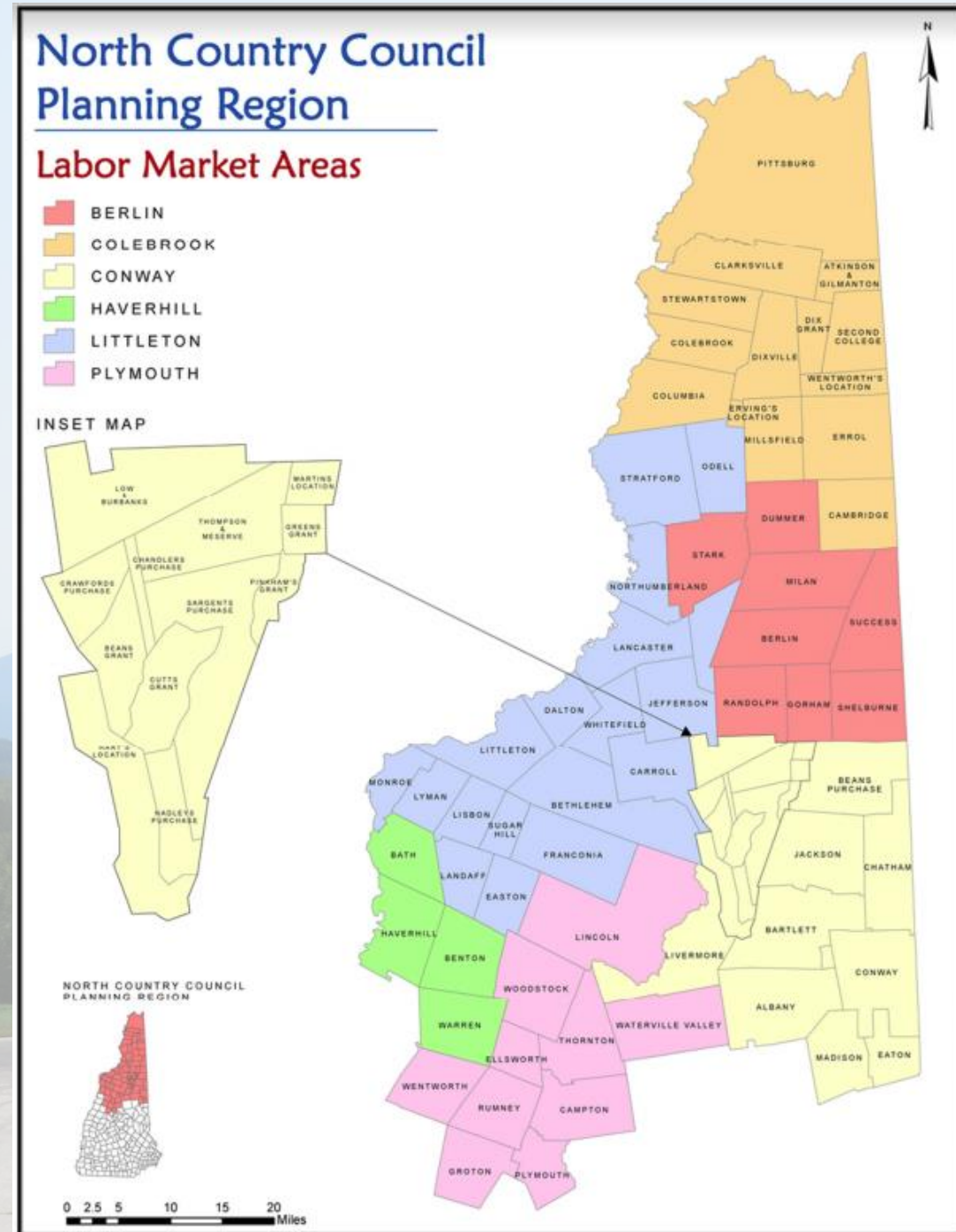
July 19th, 2018

Purpose of the RTP

- Identify **existing conditions, issues, and opportunities** related to transportation in the region
- Serves as a basis for **project development and prioritization** in the **Regional Transportation Improvement Plan, Ten Year Plan, and for TAP applications.**
- Provides a **regional perspective** for community-level transportation and master planning
- Define **Vision, Goals, and Objectives** for transportation in the region
- Opportunity for significant **public outreach/input**
- Updated every **4 years**

2015 RTP Update

- Developed in tandem with *A Plan for New Hampshire's North Country*
- Leveraged Granite State Future funding for public outreach
- Labor Market Area breakdown
- Identified specific projects based on solicitation from towns

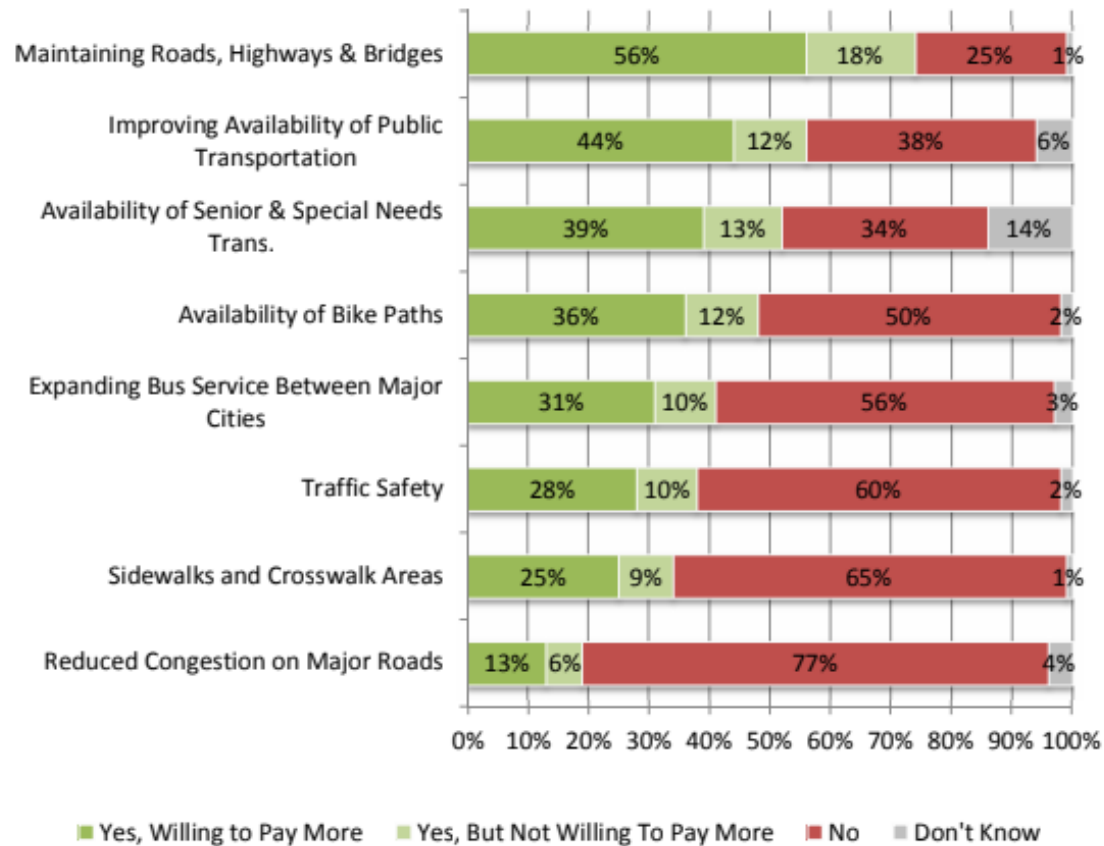


Strengths of 2015 RTP

- LMA profiles provide insights into transportation-related conditions at a sub-regional level
 - Particularly useful for understanding commuting patterns
- Significant public outreach

Town Name	Population 2000 Census	Population Change 00-10	Population 2010 Census	OEP Projection 2040
Littleton Labor Market Area Travelshed				
Littleton	5,845	83	5,928	5,862
Lancaster	3,280	227	3,507	3,194
Bethlehem	2,199	327	2,526	2,838
Whitefield	2,038	268	2,306	2,202
Northumberland	2,438	-150	2,288	1,828

SHOULD POLICY MAKERS INVEST MORE MONEY IN TRANSPORTATION?



Issues with 2015 RTP

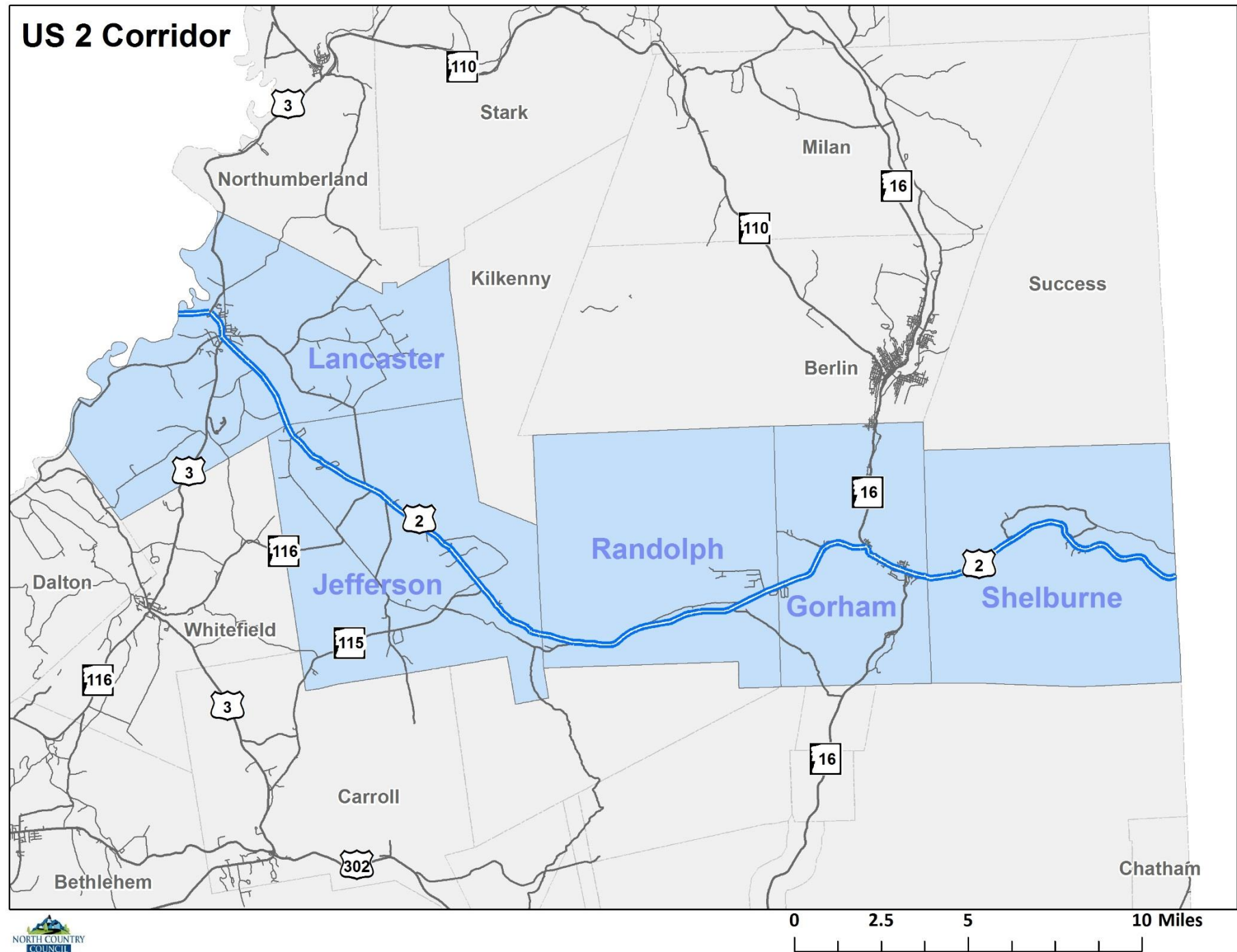
- Difficult to identify specific infrastructure needs using LMA approach
- Plan is very large (224 pages)
- Plan is difficult to interpret
- Project identification is somewhat random, is not distilled from needs and issues identified in plan

Approach for 2019 RTP

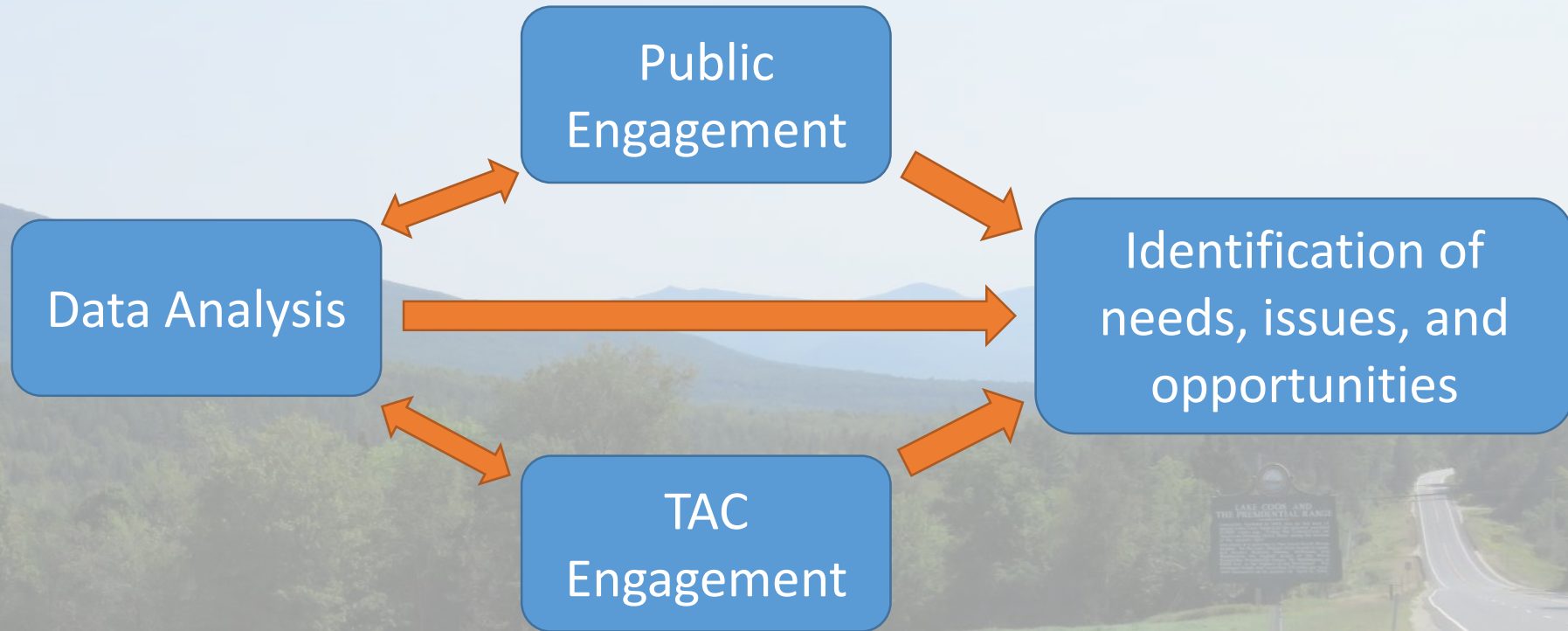
- Use **corridor-based approach** rather than Labor Market Areas
- Rather than identifying specific projects, focus on identifying **needs, issues, and opportunities**
 - Specific projects to be identified in **2019 & 2021 RTIP**
- Develop a plan that is **actionable** and a **useful reference** for local and state officials
- Use **public input** to guide **data analysis**

Example Corridor

Note: most towns will fall into multiple corridors (e.g., Lancaster will also be in US 3 corridor)



Process for 2019 RTP



Public Engagement

- RTP survey
- Public forums
- Direct outreach to municipal officials
- Review of municipal Master Plans and other relevant planning documents and studies
- Regional boards and committees (NCC TAC, NCC Commissioners)
- Roundtable with community partners

Questions for the TAC

- What do you think of this approach?
- Who should we be engaging?
- What are some of the high-level needs, issues, and opportunities that the plan should address?