







TRANSPORTATION ADVISORY COMMITTEE

MARCH 11TH 2021

9:00AM - 11:00AM

CALL TO MEETING & ROLL CALL

AGENDA

1. REVIEW AND VOTE ON MINUTES* 
2. RECOVERY & RESILIENCY
3. TEN YEAR PLAN* 
4. UPDATES
 - NCC Projects
 - Scenic Byways
 - Updates From Communities 
5. FINAL THOUGHTS/COMMENTS 
6. ADJOURN


REVIEW & VOTE ON MINUTES

RECOVERY & RESILIENCY

**PRESENTATION FROM
STACEY DOLL**



NORTH COUNTRY RISING
RECOVERY & RESILIENCY OF COMMUNITY



North Country Council received support through the CARES Act to work with our region on COVID-19 recovery and resiliency efforts. The goal is to support recovery efforts that are nimble to our communities' unfolding needs. Activities will focus on mitigation and avoidance of current and further impacts of COVID-19 and other unprecedented disasters. Recovery planning and implementation will be aimed toward rebuilding and increasing resilience in the regional economy.



Guiding Principals

Create a Triple Bottom Line approach to a resilient economy which includes People, Planet and Profit

Value all Eight Forms of Capital in a resilient economy model which includes Human, Social, Natural, Cultural, Financial, Political, Physical, and Intellectual Capitals

Use Systems Thinking and an Asset-Based Approach to create the plan

Build connections, leverage resources, and capital, and co-create solutions – we are in this together

Planning Process

The Framework: Hold a series of Focus Group conversations to explore the following:

- **Define** what it means to be resilient, inclusive, and caring for their sector's economy
- **Discover** and share assets with the sector
- **Dream** of what could be within the sector
- **Design** solutions to support these Ideas
- **Direction** by creating implementation steps and evaluation strategies





The Focus Groups will include:

- Education
- Healthcare
- Child & Family Services
- Arts & Culture
- Small Business & Main Streets
- Community Governance & Services
- Recreation, Tourism, & Environment
- Food & Agriculture
- Additionally, North Country Council will engage the existing transportation, economic development, and housing committees into this planning process

After each Focus Group conversation, a summary report will be available online for further comments, edits, and additions





Once all the Focus Groups have completed their conversations, answering the five "D" process above (Define, Discover, Dream, Design, and Direction) then we will pull together representation from each Focus Group to participate in a series of Network Conversations where we will look at cross-sector solutions (see the fourth bullet under Guiding Principals).

A final plan, tools, and resources will be developed, there will be an opportunity for additional comments and feedback, and then the plan will be used to update the Comprehensive Economic Development Strategy (CEDS) for our region and submitted to the Economic Development Administration.





A Plan for Recovery and Resiliency

Our Task:
North Country Council is leading a planning process to develop strategies and solutions for a more resilient, inclusive, and caring economy that can withstand, adapt, innovate, and transform in the face of natural and human disasters.



Our Goal:
By the summer of 2022, finalize a plan for economic recovery and resilience that was created by a diverse representation of our region and includes specific actions and implementation strategies.



Guiding Principals

Create a Triple Bottom Line approach to a resilient economy which includes People, Planet and Profit

Value all Eight Forms of Capital in a resilient economy model which includes Human, Social, Natural, Cultural, Financial, Political, Physical, and Intellectual Capitals


Use Systems Thinking and an Asset-Based Approach to create the plan

Build connections, leverage resources, and capital, and co-create solutions – we are in this together

Planning Process

The Framework: Hold a series of Focus Group conversations to explore the following:

- Define what it means to be resilient, inclusive, and caring for their sector's economy
- Discover and share assets with the sector
- Dream of what could be within the sector
- Design solutions to support these ideas
- Direction by creating implementation steps and evaluation strategies



The Focus Groups will include:

- Education
- Healthcare
- Child & Family Services
- Arts & Culture
- Small Business & Main Streets
- Community Governance & Services
- Recreation, Tourism, & Environment


Additionally, North Country Council will engage the existing transportation, economic development, and housing committees into this planning process



After each Focus Group conversation, a summary report will be available online for further comments, edits, and additions



Once all the Focus Groups have completed their conversations, answering the five "D" process above (Define, Discover, Dream, Design, and Direction) then we will pull together representation from each Focus Group to participate in a series of Network Conversations where we will look at cross-sector solutions (see the fourth bullet under Guiding Principals).



A final plan, tools, and resources will be developed, there will be an opportunity for additional comments and feedback, and then the plan will be used to update the Comprehensive Economic Development Strategy (CEDS) for our region and submitted to the Economic Development Administration.



Where we are to date . . .

- Food & Agriculture Focus Group completed (20 plus participants – food coops, farmers, UNH Coop Ext, Taproot, Food Pantries)
- Arts & Culture – last mtg today at 10am (18 participants – Colonial, Weathervane, Great North Woods Center for Arts, NH Council on the Arts, local artists, Catamount Arts, Franconia Art Walk)
- Education began this week (presentation to superintendents; now engaging teachers & principles)
- Outdoor Recreation & Environment starts March 31st
- Collaborating with Coos Coalition for Child Care
- Next to plan: Community, Small Business and Healthcare





NORTH COUNTRY RISING
RECOVERY & RESILIENCY OF COMMUNITY

- Any disruptions in transportation systems and services we need to think about when planning for economic recovery and resiliency?
- Any ideas/concepts for transportation systems or services that would support a more resilient region?
- How would the TAC like to stay updated/involved in this important planning process?

TEN YEAR PLAN

- All four eligible projects submitted to NHDOT
- NHDOT estimates & comments
- Revision of projects (as needed)
- Vote on project progression



TEN YEAR PLAN

Gorham US2

Gorham US2

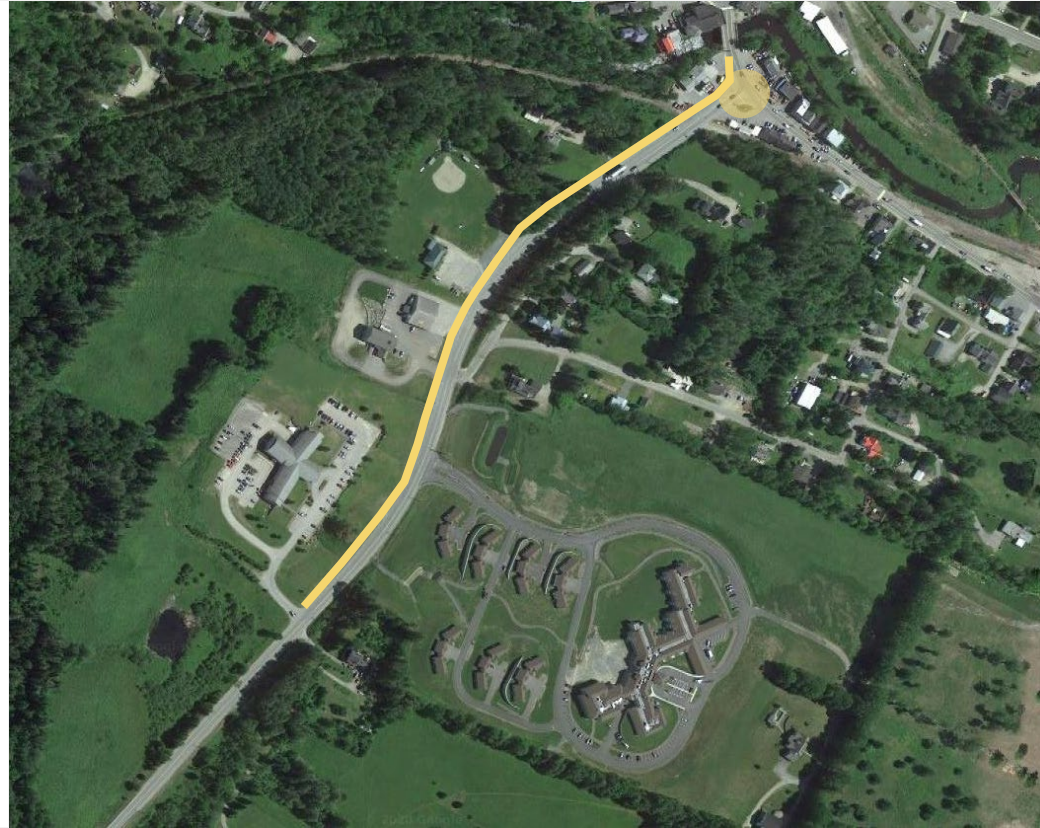
replace 9,360' of sidewalk to be ADA accessible and Complete Streets upgrades to include traffic-calming, seasonal infrastructure, and separated bike lanes where possible



TEN YEAR PLAN

Whitefield NH116

construction of approx. 2000' of sidewalk, crossing improvements, and intersection improvements on NH116



TEN YEAR PLAN

Berlin NH16

Berlin NH16

reconstruction of approximately 4,300' of road and sidewalk, upgrade sidewalks to ADA compliance, and addressing aged drainage systems



TEN YEAR PLAN

Littleton US302

Littleton US302

construction of approx. 9,600' of sidewalk and new pedestrian controlled crossings at the Walmart traffic signal



TEN YEAR PLAN

NHDOT Comments

General Reasons:

- NHDOT added 10% admin cost and 2.8% per year inflation cost
- NHDOT requires greater engineering percentage (10% → 15%)

Project-Specific Reasons :

- Gorham: NHDOT standards estimated sidewalk reconstruction higher due to relay of all curbing and pavement overlay
- Berlin: NHDOT notes that similar completed projects have cost \$4m

TEN YEAR PLAN

Berlin Project

Berlin project is within an urban compact, meaning that the City is responsible for 20% of the project costs:

NHDOT (80%): \$4,611,000
City of Berlin (20%): \$1,152,000
Total Cost (100%): \$5,763,000

Whitefield Project

Due to the amount of unknown and needed data on turning movements, the controlled intersection portion of the project has been omitted. The new cost estimate is as follows:

Original Estimate: \$1,496,000
New Estimate: \$1,038,000
Reduction: \$458,000

TEN YEAR PLAN

All Projects (cost to region)

Gorham: \$1,943,000
Whitefield: \$1,038,000
Berlin: \$4,610,000
Littleton: \$5,544,000

Total: \$13,135,000

Total Project Estimate: \$13,135,000

\$13,135,000	
- \$5,544,000	Littleton project
<hr/>	
\$7,591,000	
- \$6,106,000	Regional allocation
<hr/>	
\$1,485,000	

2025-2034

\$6,106,000
- \$1,485,000
<hr/>
\$4,621,000

OPTIONAL BREAK (5 MINUTES)



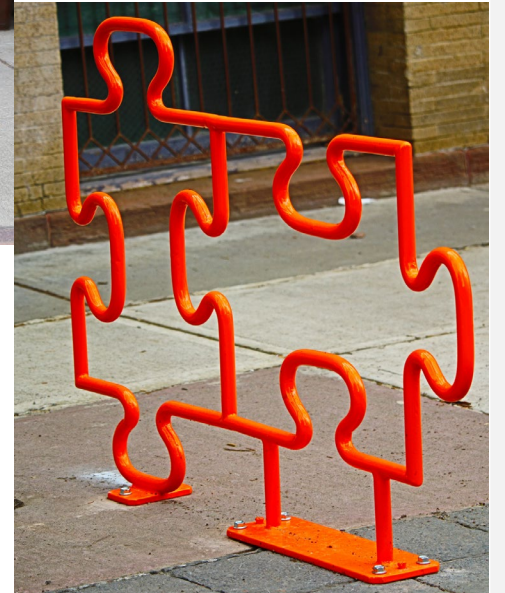
REGULAR UPDATES

NCC PROJECTS

- Ride&Rack
 - » Map existing and desired locations
 - » Create planning guidance
 - » Installation of new bike racks
 - design contest

Mapping tool if now live and can be accessed at:

<https://tinyurl.com/RideRackMap>



REGULAR UPDATES

NCC PROJECTS

- **Complete Streets**
 - » Plan policy workshop
 - » Pop-Up program for this field season
 - » Assist with community goals

Great Resource on Pop-Ups:

<http://tacticalurbanismguide.com/>



REGULAR UPDATES

REGIONAL PLANS

- Presented at next TAC meeting (May 13th)

SCENIC BYWAYS

- Carl Martland

UPDATES FROM COMMUNITIES

- Updates, questions, comments

FINAL THOUGHTS/COMMENTS

