




# TRANSPORTATION ADVISORY COMMITTEE

***JANUARY 14<sup>TH</sup> 2021***

***9:00AM - 11:00AM***

# CALL TO MEETING & ROLL CALL

# AGENDA

1. REVIEW AND VOTE ON MINUTES\* 
2. UPDATES
  - NCC Projects
  - Scenic Byways
  - Updates From Communities 
3. FINAL THOUGHTS/COMMENTS 
4. ADJOURN

# REVIEW & VOTE ON MINUTES

# REGULAR UPDATES

## RIDE&RACK

- » Map existing and desired locations
- » Create planning guidance
- » Coordinate with local vocational programs and artisans to make new bike racks

Mapping tool is now live! Check it out at:

<https://tinyurl.com/RideRackMap>



Ride&Rack

a bicycle planning effort  
by North Country Council



### YOUR HELP IS NEEDED

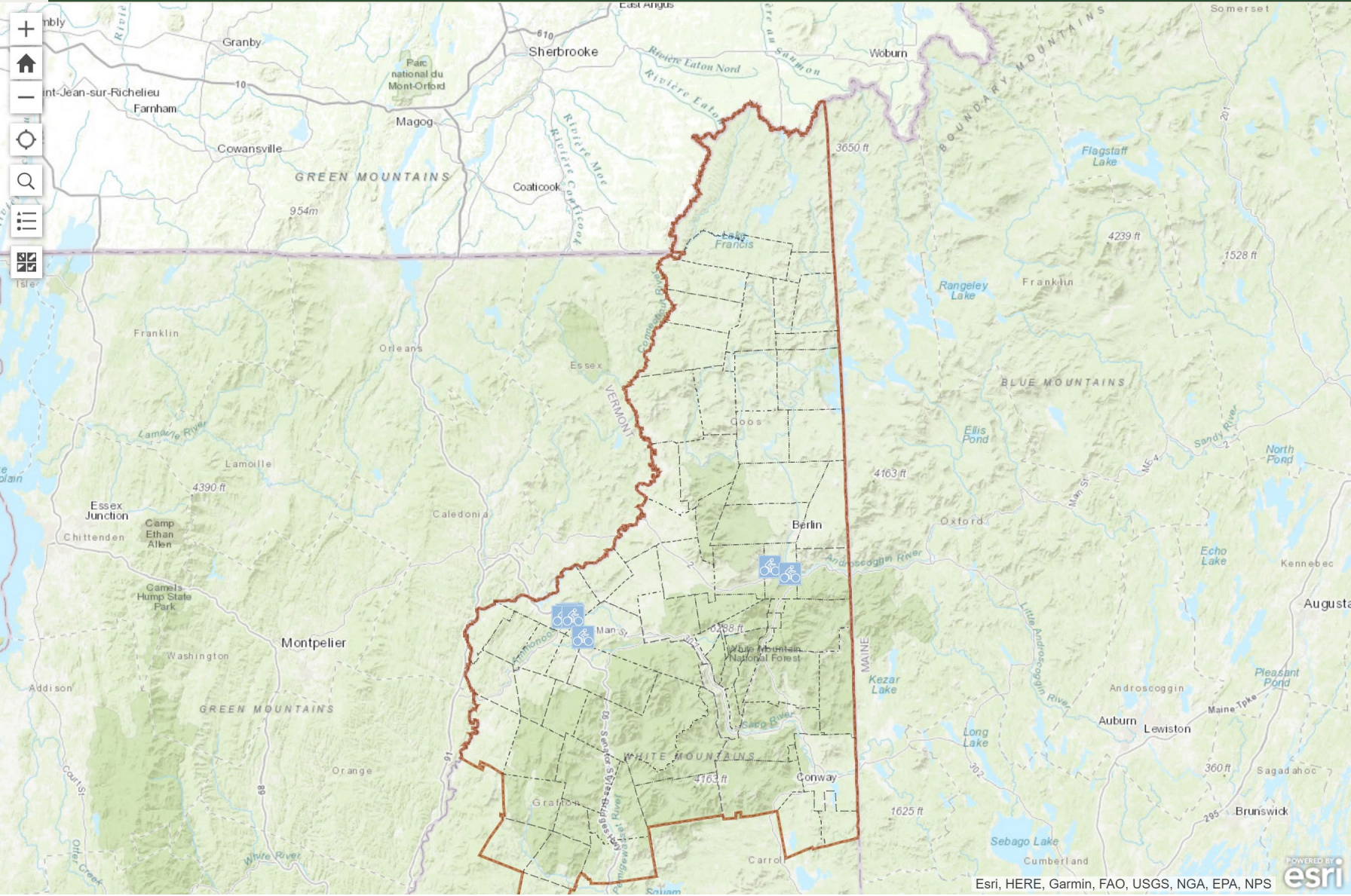
North Country Council has created an online tool to help gather information about existing bike racks, as well as where bike racks are needed. Click the button below to check this tool out and start helping us gather necessary data about bike amenities in the North Country.

Bike Rack Mapping Tool

# GETTING STARTED



Ride&Rack



Bike Rack Map — Topographic



Bike Rack Map — Satellite Imagery



Click either the **topographic** or **satellite** basemap to begin.

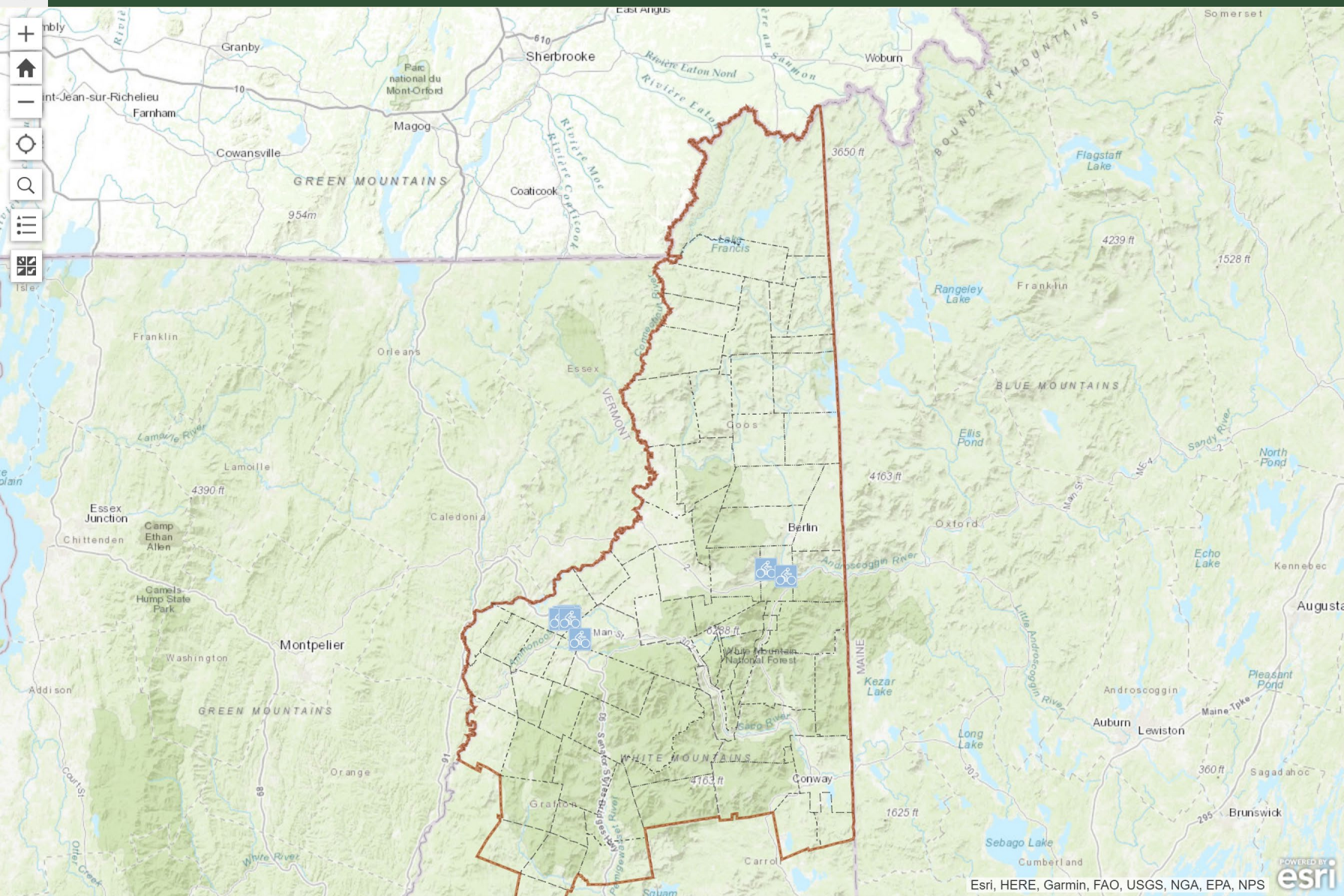
**Topographic** will show elevations and geographic character of the area

**Satellite** will show aerial imagery of the area

# GETTING STARTED



Ride&Rack

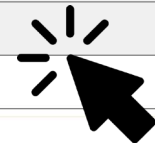


Bike Rack Map — Topographic



Existing Bike Racks

Needed Bike Racks



Bike Rack Map — Satellite Imagery



Click either the **existing** or **needed** tabs to view submissions or submit a report.

**Existing** will show locations of existing bike racks

**Needed** will show locations where bike racks have been suggested

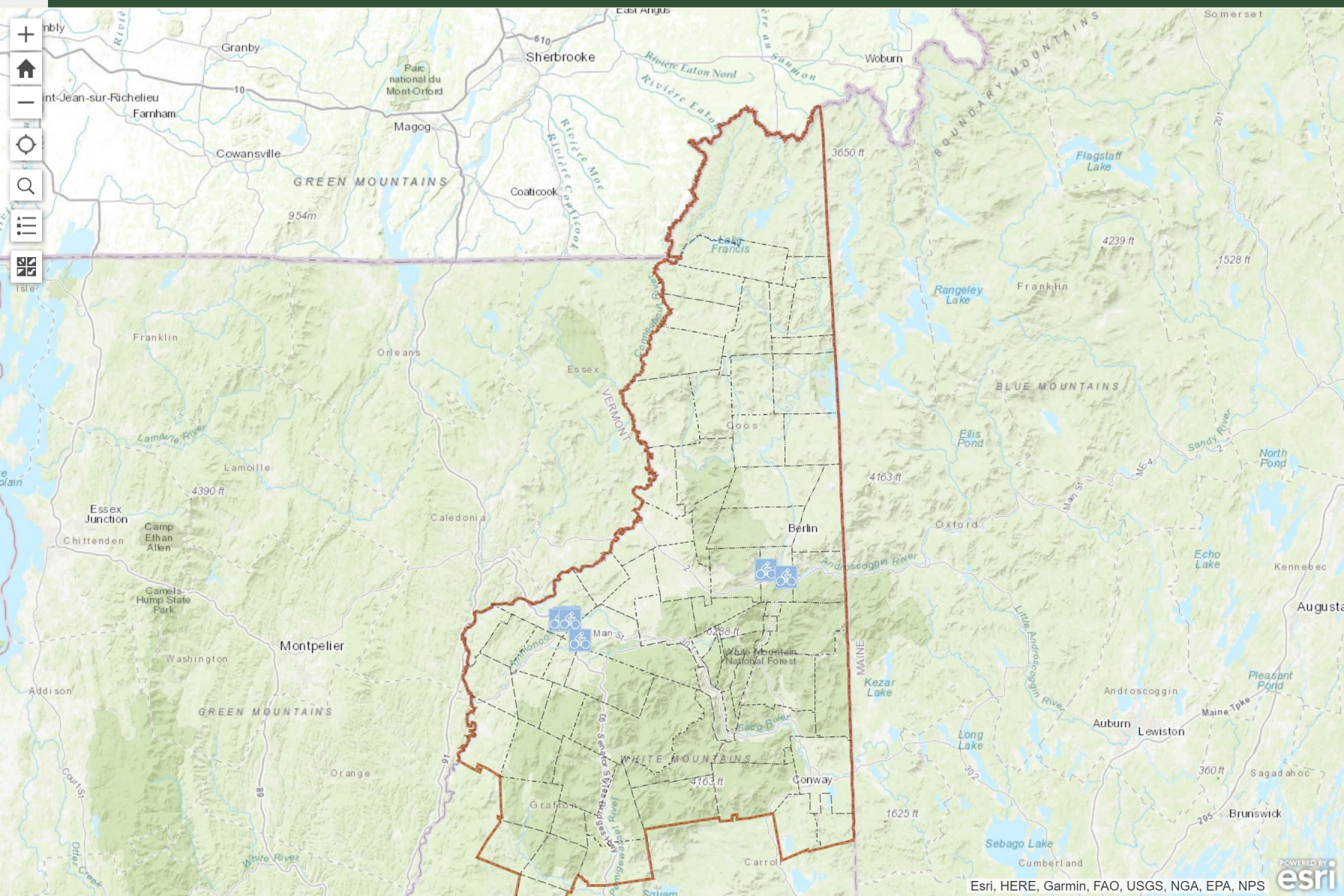
Esri, HERE, Garmin, FAO, USGS, NGA, EPA, NPS



# EXISTING BIKE RACKS



Ride&Rack



Esri, HERE, Garmin, FAO, USGS, NGA, EPA, NPS



- Existing Bike Racks
- existing\_bike\_rack\_locations
- existing\_bike\_rack\_locations
- existing\_bike\_rack\_locations
- existing\_bike\_rack\_locations
- existing\_bike\_rack\_locations
- existing\_bike\_rack\_locations
- existing\_bike\_rack\_locations
- existing\_bike\_rack\_locations
- existing\_bike\_rack\_locations

Click '+Submit a Report' to add your input to the map.

+ Submit a Report

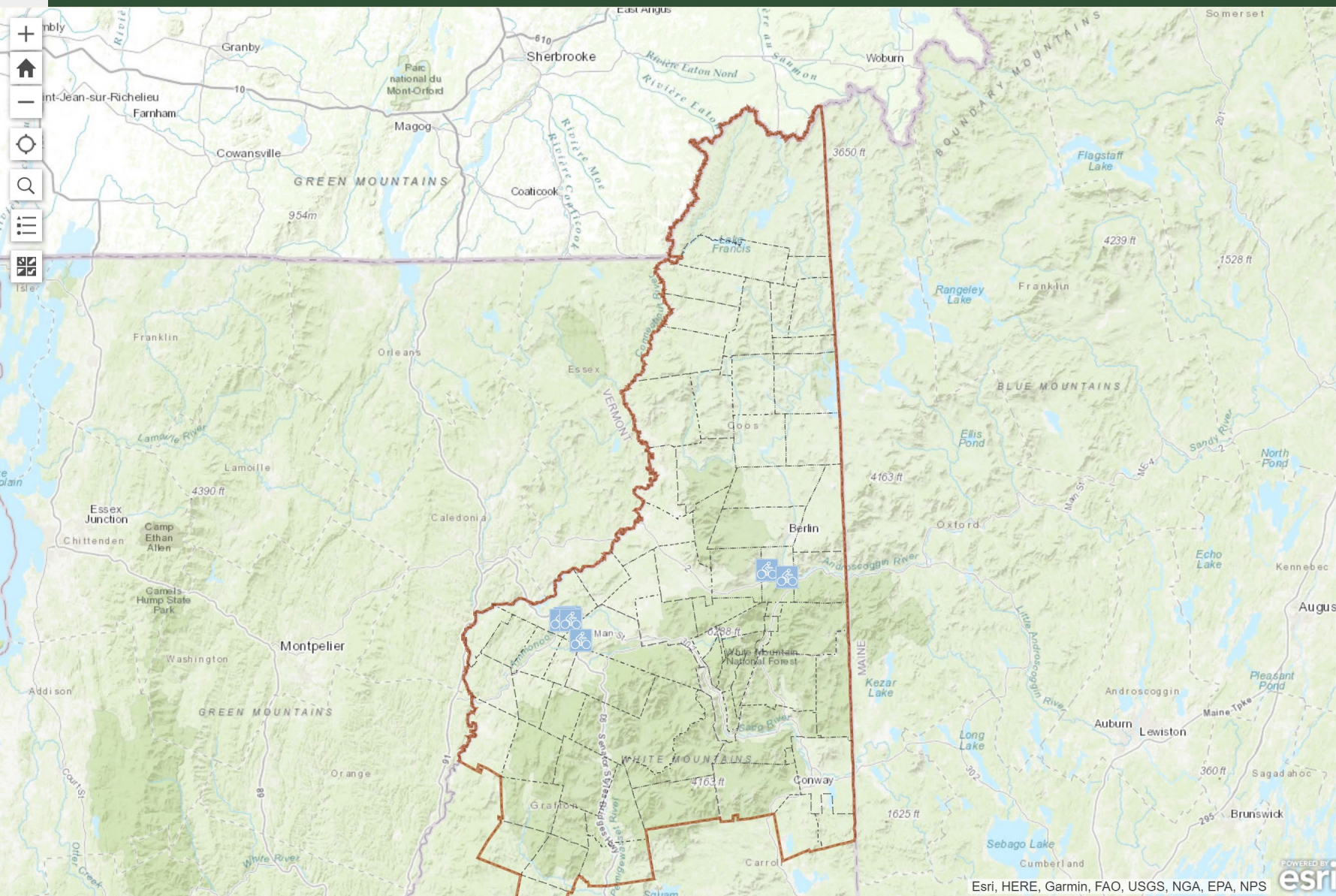




# EXISTING BIKE RACKS



Ride&Rack



## Existing Bike Racks

### Details

Nearby Landmark(s) (required)

Number of Spaces

Type

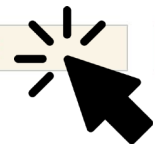
Comments

### Attachments

Browse

### Location

Click the map to draw the location.

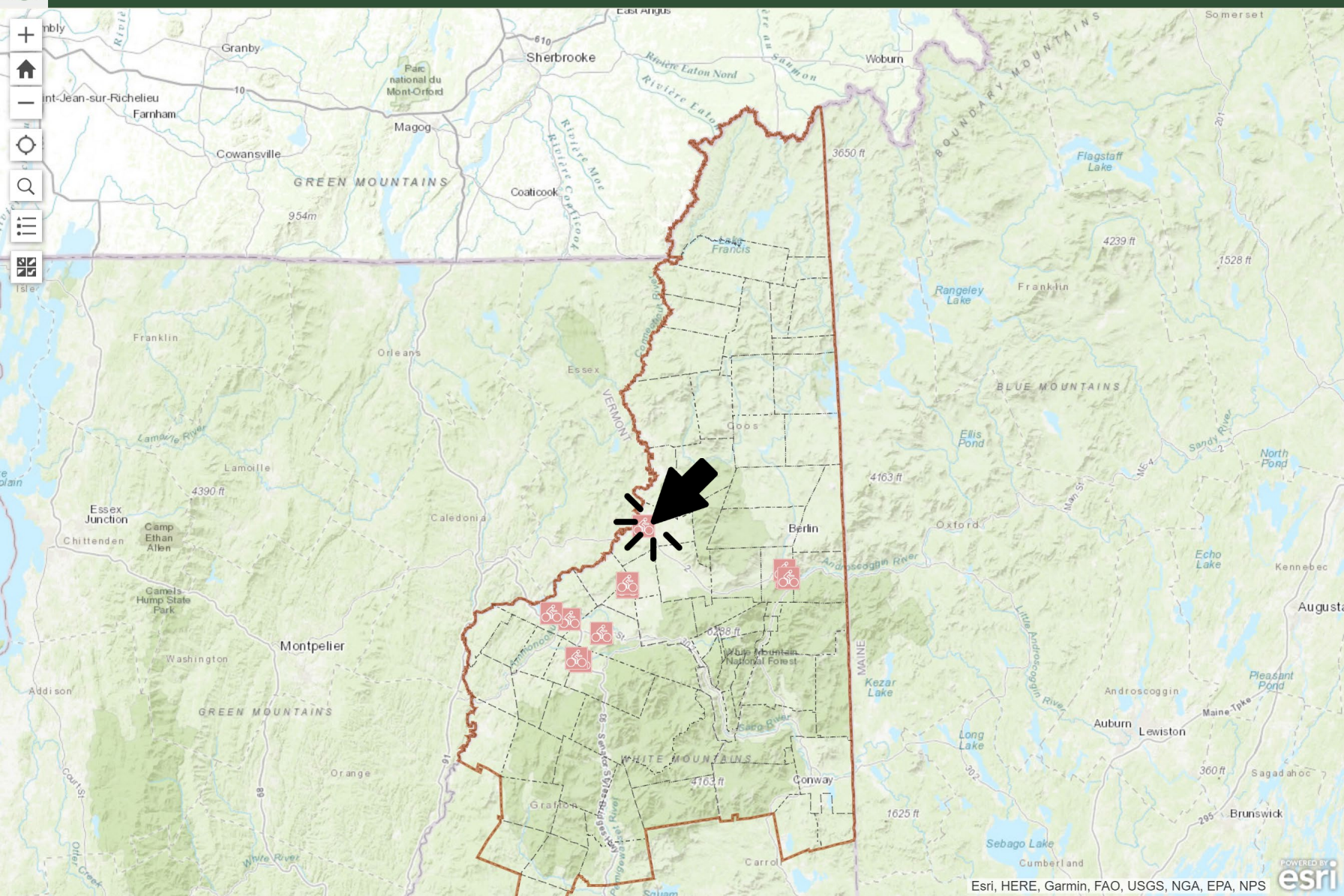
    

This is the form you will be prompted to fill out if you are adding an existing bike rack to the map. Click 'Report It' when you are finished filling it out.

# NEEDED BIKE RACKS



Ride&Rack



Esri, HERE, Garmin, FAO, USGS, NGA, EPA, NPS



Needed Bike Racks	
potential_bike_rack_locations	1 ♥
potential_bike_rack_locations	1 ♥
potential_bike_rack_locations	1 ♥
potential_bike_rack_locations	0 ♥
potential_bike_rack_locations	0 ♥
potential_bike_rack_locations	0 ♥
potential_bike_rack_locations	0 ♥
potential_bike_rack_locations	0 ♥
potential_bike_rack_locations	0 ♥
potential_bike_rack_locations	0 ♥
potential_bike_rack_locations	0 ♥

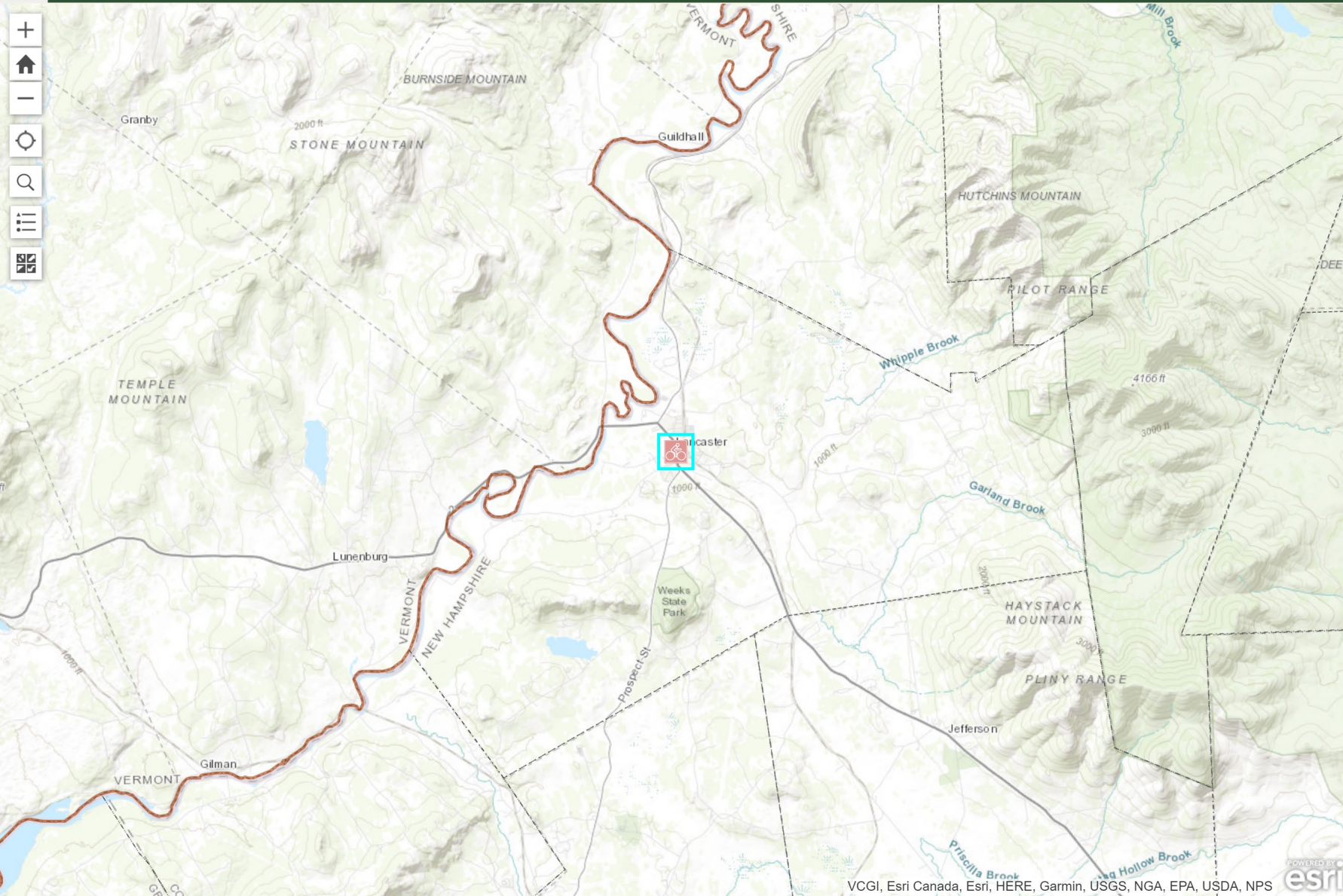
Click any of the suggested locations to view additional information and to 'up-vote' the suggestion.

[+ Submit a Report](#)

# NEEDED BIKE RACKS



Ride&Rack



VCGI, Esri Canada, Esri, HERE, Garmin, USGS, NGA, EPA, USDA, NPS



## Needed Bike Racks

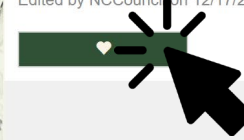
0

### potential\_bike\_rack\_locations

Nearby Landmark(s) Lancaster Downtown

Reason Safer area for bikes before busy main st business area

Edited by NCCouncil on 12/17/20 at 2:58 PM



If you believe the location is an important place for a new bike rack, 'up-vote' the suggestion by clicking the heart button.

# REGULAR UPDATES

## TRANSPORTATION ALTERNATIVES PROGRAM

- Transportation-focused pedestrian & bicycle infrastructure
- 80/20 match up to \$1,200,000
- Letter of Interest
  - » due February 5<sup>th</sup> 2021
  - » visit <https://tinyurl.com/NH2021TAP> for more information



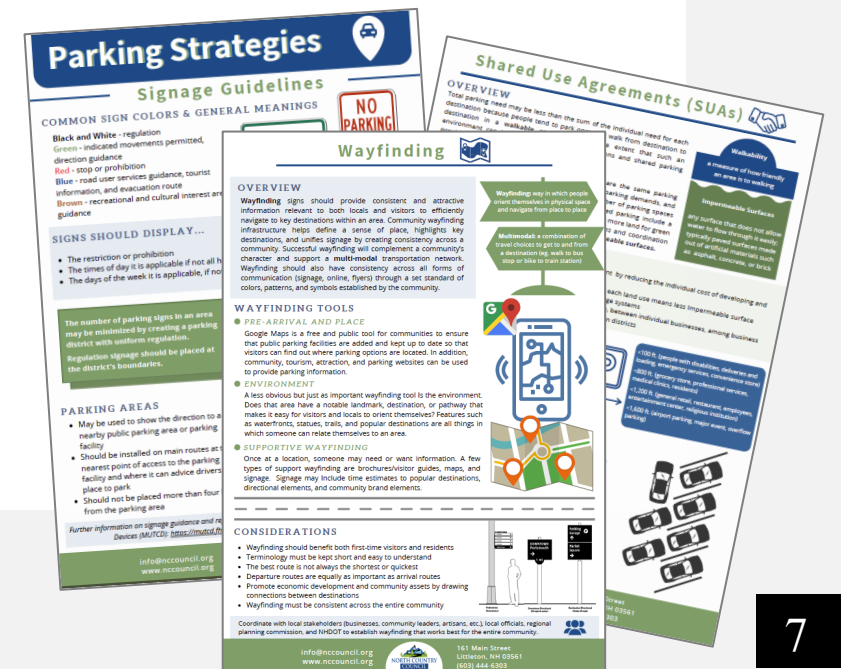
# REGULAR UPDATES

## PLANS

- Regional Transportation Plan
- Coordinated Public Transit Human Services Transportation Plan

## GUIDANCE / EDUCATIONAL MATERIALS

- Parking Strategies
- Funding Opportunities



# REGULAR UPDATES

## SCENIC BYWAYS



## UPDATES FROM COMMUNITIES

- Updates, questions, comments

# FINAL THOUGHTS/COMMENTS

